

RASCOTec Collar

INJECTION SYSTEM

INJECTION SYSTEMS

The RASCOTec injection system is a comprehensive system consisting of different profile types. This allows it to be used optimally for various technical requirements, such as waterproofing construction joints, crack control joints, expansion joints or penetrations. The profiles of the RASCOTec injection system are always installed in the concrete. Once the concrete has hardened, the RASCOTec injection systems are injected using RASCOflex injection resins. The advantage of using the RASCOTec injection system is that the subsequent injection can be carried out efficiently and in a controlled manner, whereby neighbouring defects are usually sealed automatically. The choice of injection medium should always be based on the functional requirements and the conditions of the application.

The profiles of the RASCOTec injection systems have been specially developed to generate the largest possible opening to the joint, with the fine-pored, open-cell carrier foam in the opening serving as a permanent material depot. Particularly when used with acrylates/gels, such as the injection materials in the RASCOflex AY series, the material depot has a very positive effect on the permanent sealing of any joint openings that may subsequently occur.

USE

The RASCOTec Collar is a profile made of a fine-pored, open-cell foam and is used for installation parts such as pipes, manholes, groundwater relief nozzles, floor drains, etc. The material type of the component to be sealed is irrelevant. The RASCOTec Collar is placed around the corresponding component and fixed in place with the RASCOTec MSB tightening strap. Due to the dimensions and the material depot created (after injecting the RASCOTec Collar), even slight movements of the pipes (e.g. thermally induced changes) do not present any additional difficulties.

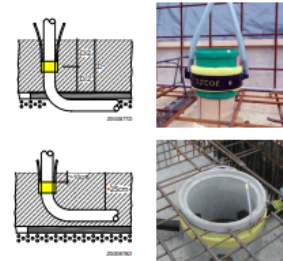
FEATURES

- easy fixing
- use in conjunction with any material type
- independent of geometry of built-in component
- weldable
- weather-independent installation
- simple and very quick installation
- can be regouted
- profile made from partially recycled, environmentally friendly HDPE

EXPERT REPORTS

- Conformity certificate, Asendorf Bauchemie Consult GmbH, Wiesbaden, Germany

LEGAL NOTICE: The information provided on the use and application of our products in this technical data sheet is based on the present state of our knowledge. The customer shall bear sole responsibility for the proper specification, application and use of the products in line with the intended purpose, project-specific conditions and external actions. The most recent technical data sheet shall apply. The current technical data sheets are available at www.rascor.com. Our General Terms of Business shall form an integral part of this technical data sheet.



Further product info



RASCOR International Ltd.
Gwerbestrasse 4
CH-8162 Steinmaur / Switzerland
Phone: +41 (0) 44 857 11 11
www.rascor.com
info@rascor.com

RASCOR Construction Chemicals GmbH
Ratsgasse 6
DE-97688 Bad Kissingen / Germany
Phone: +49 (0) 971 130 27 38
www.rascor.com
badkissingen@rascor.com



RASCOtec Collar

INJECTION SYSTEM

TECHNICAL/PHYSICAL DATA

Size	length 200 cm width 60 mm height 15 mm
Colour	yellowish
Supplied form	solid
Chemical base	polyester
Hazardous goods/ADR	none
Storage / shelf life	unlimited

SUPPLY/ADDITIVES

Item no.	Product	Container	Contents
1102.1003.001	RASCOtec Collar, 2000 x 60 x 15 mm	bundle	20 m
1102.1004.001	RASCOtec MSB 110 49 cm	bag	25 pcs
1102.1004.003	RASCOtec MSB 125 57 cm	bag	25 pcs
1102.1004.005	RASCOtec MSB 150 65 cm	bag	25 pcs
1190.0101.001	RASCOfix Cable Tie, 200 x 4,8 mm	bag	100 pcs
1190.0102.001	RASCOfix Cable Tie, 370 x 4,8 mm	bag	100 pcs
1190.0103.001	RASCOfix Cable Tie, 775 x 9,0 mm	bag	100 pcs
1190.0501.001	RASCOfix Concrete Adhesive Tape, Width 48 mm	roll	50 m
1205.0302.001	Nozzle hose, Outer diameter 18 mm	roll	50 m



RASCOtec Collar

INJECTION SYSTEM

APPLICATION/PREPARATION

The RASCOtec Collar shall be fitted tightly so as to ensure that its full surface is in contact with the base. It shall be properly cut to size to prevent the formation of any voids at the joint. Collars are best fixed using RASCOtec MSB Collar Strap. The connector hoses shall be fixed in such a way as to protect them from any damage during concreting. Where the penetrating component is installed after concreting, i.e. not cast in, the minimum distance between component and box-out/drilling shall be 20 mm. Grouting may be performed either by drilling into the collar or by use of special connector hoses incorporated when fixing the collar. The lowest possible pressure shall be used for grouting!

GENERAL GUIDELINES / SAFETY NOTICE

For elements up to 40 cm thick, the collar shall be fixed in the middle of the element. For elements over 40 cm thick, the collar shall be fixed at a depth of 20 cm from the later grouting side. The compressive strength of the penetrating components shall be checked for the particular load case.

No special safety instructions are required



assembly video



LEGAL NOTICE: The information provided on the use and application of our products in this technical data sheet is based on the present state of our knowledge. The customer shall bear sole responsibility for the proper specification, application and use of the products in line with the intended purpose, project-specific conditions and external actions. The most recent technical data sheet shall apply. The current technical data sheets are available at www.rascor.com. Our General Terms of Business shall form an integral part of this technical data sheet.

RASCOR International Ltd.
CH-8162 Steinmaur / Switzerland
Phone: +41 (0)44 857 11 11

RASCOR Construction Chemicals GmbH
D-97688 Bad Kissingen / Germany
Phone: +49 (0)971 130 27 38